



aerospace
climate control
electromechanical
filtration
fluid & gas handling
hydraulics
pneumatics
process control
sealing & shielding



Truck Mounted Cranes

Directional Control Valve Application Solutions



ENGINEERING YOUR SUCCESS.

Truck Mounted Cranes

Parker offers a full line of directional control valves, hydraulic controllers and crane specific solutions for this market.



Parker has developed application specific control solutions for this market, which are intended to improve machine performance and lower the installed cost.

Our long standing application knowledge of these machines has enabled Parker to develop features truly valued by the customer and the end-user.



Solenoid selectable power-beyond outlet

Series V20 Valve

Parker's V20 directional control valve is a proven performer in this market. It has very low pressure drops and optimized metering spools designed specifically for these machines.

- Broad offering of port accessories
- Pressures up to 3500 PSI
- Flows up to 25 GPM
- Open-center & Load-sense



Unloading valve for work ports and two speed winch operation



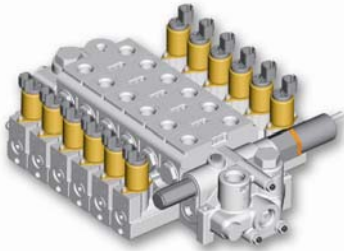
Directional control valve assembly with integrated unloading valves for lift and tele and selectable winch boost

Other features include:

- Integrated unloading valves for anti-tip control
- Integrated solenoid to control the functionality of the unloading valves
- Solenoid selectable power-beyond for two speed winch operation
- Neutral interlock positioner
- For radio-remote operation, an integrated section to generate and regulate the pilot signal to the work-section solenoids
- Work-section proportional solenoids with push pin overrides



Series V20EH Valve



The electrohydraulic package for the V20 includes an on-demand pressure-generating / regulation section. This means that when the spools are in neutral, the open-center pressure drop is low; ~75 PSI @ 20 GPM for a 4-spool assembly.

When a spool is selected, a signal is sent to the pressure-generating section to build enough pressure to move the spool.



Solenoid Features



- Can be used for proportional or on/off control
- Available in 12V and 24V
- Connector options are Deutsch, Amp Jr and Weatherpak
- Pushpin overrides are available

Series V20 Valve with an Integrated Manifold

Custom designed manifold integrated into a V20 to add features and reduce cost for a specific vehicle.



Series VG20 Valve

Used on winch application with flows from 25-45 GPM.

Features:

- 45 GPM, 3500 PSI
- Low pressure drops
- Available with unloading valves for anti-tube lock (anti-two block)



- Outstanding relief valve performance
- Available spool positioners are manual, pilot and EH.

Outrigger Solution Series MD06 Valve



- Direct shift solenoid valve. Does not require any pilot pressure.
- Modular design allows for bolt-on options for port accessories.
- Available in 2 or 3 position, 4-way valves
- Flows up to 25 GPM
- Pressures up to 3000 PSI

Series PCL Controllers



Our hydraulic-remote controllers have spring packs that optimize the controllability of our directional control valves. They are compact and can fit into the armrest for finger-tip control.



Parker Hydraulics International Sales Offices

North America

Hydraulics Group Headquarters

6035 Parkland Boulevard
Cleveland, OH 44124-4141 USA
Tel: 216-896-3000
Fax: 216-896-4031

Parker Hannifin Canada Division

160 Chisholm Drive Milton
Ontario, Canada L9T 3G9
Tel: 905-693-3000
Fax: 905-876-1958

Mexico

Parker Hannifin de México

Industrial Hydraulic Sales
Eje Uno Norte No. 100
Parque Industrial Toluca 2000
Toluca, Edo. de Mexico CP 50100
Tel: 52 72 2275 4200
Fax: 52 72 2279 9308

Parker Hannifin de México

Mobile Hydraulic Sales
Via de FFCC a Matamoros 730
Apodaca, NL CP de Mexico 66600
Tel: 52 81 8156 6000
Fax: 52 81 8156 6068

Europe

Hydraulics Group Headquarters

La Tuilière 6
1163 Etoy - Switzerland
Tel: 41 21 821 8500
Fax: 41 21 821 8580

South Africa

Parker Hannifin Africa Pty Ltd

P.O. Box 1153
ZA-Kempton Park 1620,
Republic of South Africa
Tel: 27 11 961 0700
Fax: 27 11 392 7213

Mobile Sales

Mobile Sales Organization and Global Sales

850 Arthur Avenue
Elk Grove Village, IL 60007 USA
Tel: 847-258-6200
Fax: 847-258-6299

Industrial Sales

Central Region

1042 Maple Avenue
Unit 331
Lisle, IL 60532 USA
Tel: 630-964-0796

Great Lakes Region

6035 Parkland Boulevard
Cleveland, OH 44124-4141 USA
Tel: 216-896-2740
Fax: 866-498-7507

Gulf Region

20002 Standing Cypress Drive
Spring, TX 77379 USA
Tel: 817-473-4431
Fax: 888-227-9454

Southwest Region

700 S. 4th Avenue
Mansfield, TX 76063 USA
Tel: 817-473-4431
Fax: 888-227-9454

Mid Atlantic & Southeast Regions

1225 Old Alpharetta Rd
Suite 290
Alpharetta, GA 30005 USA
Tel: 770-619-9767
Fax: 770-619-9806

Midwest Region

8145 Lewis Road
Minneapolis, MN 55427 USA
Tel: 763-513-3535
Fax: 763-544-3418

Northeast Region

P.O. Box 396
Pine Brook, NJ 07058 USA
Tel: 973-227-2565
Fax: 973-227-2467

Northwest Region

6458 North Basin Avenue
Portland, OR 97217 USA
Tel: 503-283-1020
Fax: 866-611-7308

Pacific Region

8460 Kass Drive
Buena Park, CA 90621 USA
Tel: 714-228-2509
Fax: 714-228-2511

Asia Pacific

Parker Hannifin Shanghai Ltd.

280 Yunqiao Road,
Jin Qiao Export Processing Zone
Shanghai 201206, China
Tel: 86 21 2899 5000
Fax: 86 21 6445 9717

Parker Hannifin Hong Kong Ltd.

8/F, Kin Yip Plaza
9 Cheung Yee Street
Cheung Sha Wan, Hong Kong
Tel: 852 2428 8008
Fax: 852 2480 4256

Parker Hannifin Korea Ltd.

9F KAMCO Yangjae Tower
949-3 Dogok1-dong, Gangnam-gu
Seoul, 135-860, Korea
Tel: 82 2 559 0400
Fax: 82 2 556 8187

Parker Hannifin India Pvt Ltd.

Plot No. EL-26, MIDC,
TTC Industrial Area
Mahape, Navi Mumbai, 400 709, India
Tel: 91 22 6513 7081
Fax: 91 22 2768 6841

Parker Hannifin Australia

Parker Hannifin Pty Ltd.
9 Carrington Road
Castle Hill, NSW 2154, Australia
Tel: 612 9634 7777
Fax: 612 9842 5111

Latin America

Parker Hannifin Ind. e Com. Ltda Hydraulics Division

Av. Frederico Ritter, 1100
94930-000 Cachoeirinha RS, Brazil
Tel: 55 51 3470 6090
Fax: 55 51 3470 9281

Parker Hannifin Argentina S.A.I.C.

Stephenson 2711
1667-Tortuguitas-Malvinas Argentinas
Pcia. de Buenos Aires, Argentina
Tel: 54 3327 44 4129
Fax: 54 3327 44 4199

Pan American Division

7400 NW 19th Street, Suite A
Miami, FL 33126 USA
Tel: 305-470-8800
Fax: 305-470-8808

